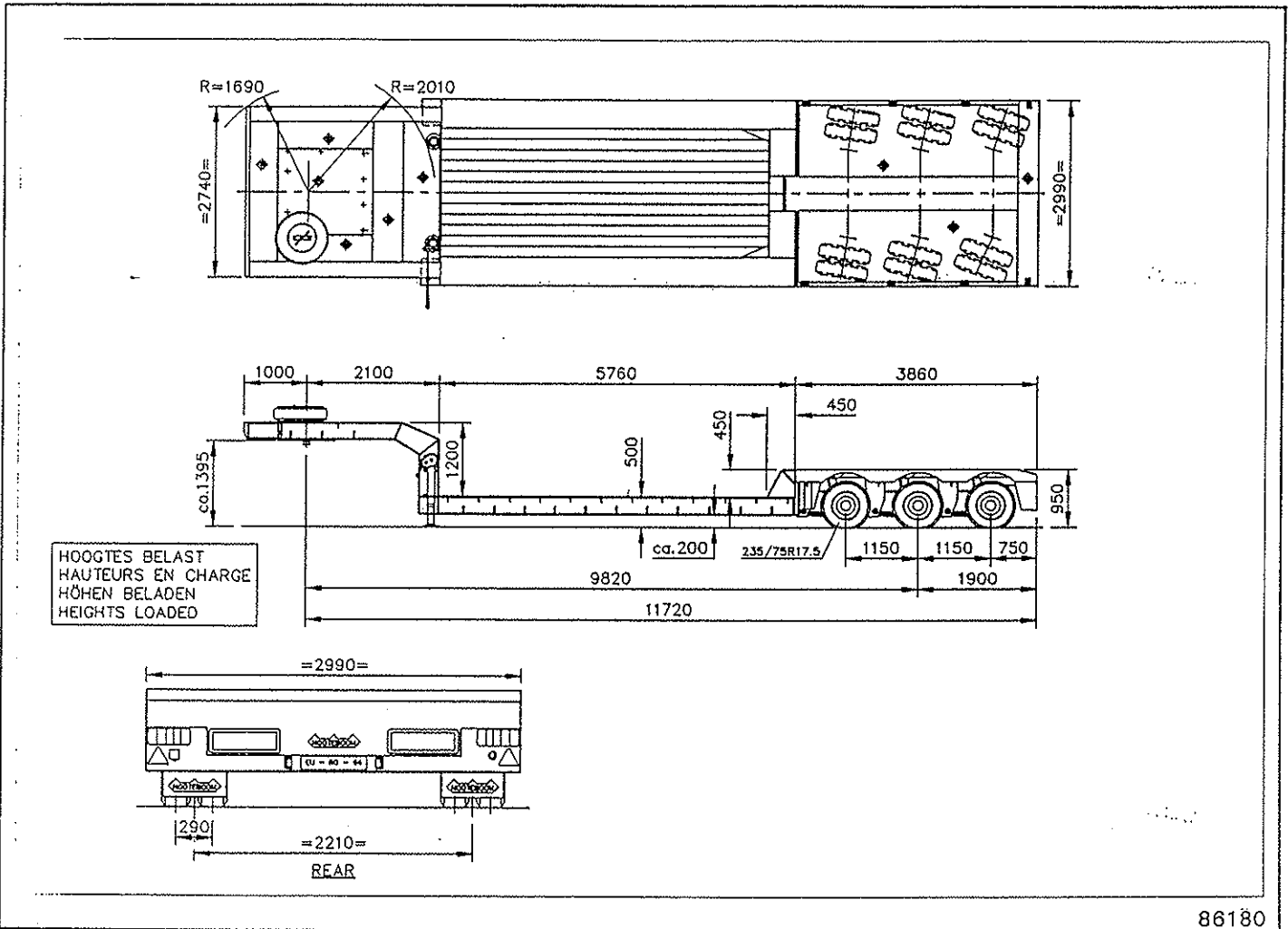




## TECHNICAL DATA

no. 51151 JAPAN dd. 7-12-'94 Country: JAPAN

**NOOTEBOOM EUROLOWBED, TYPE: EURO-61-03**



### WEIGHTS

(in tonnes)	at high speeds	design at 80 km/h	weight distribution EMPTY	weight distribution LOADED (centre of gravity in middle of loading platform)
Fifth wheel load max.	18	25	4,5	25,0
Axle bogie load max.	30	36	9,0	30,1
Gross (GVW)	48	61		55,1
Deadweight, app.	13,5	13,5	13,5	13,5
Net payload, app.	34,5	47,5		41,6

### LOWBED

Perimeter maindeck, the middle decksection covered by 5 cm. hardwood. Lashing eyes  $\phi 25$  against bottomflange and  $\phi 14$  against topflange of the mainmembers every app. 0,5m.

### AXLE BOGIE

3 knuckle spindle steered SAF axles with hubcentring, asbestosfree brakelinings and automatic slackadjusters. Nootboom hydro-pneumatic suspension, type HR including electric pumpunit for raise/lower with a max. axle travel of 300 mm. (see technical data 50319)